



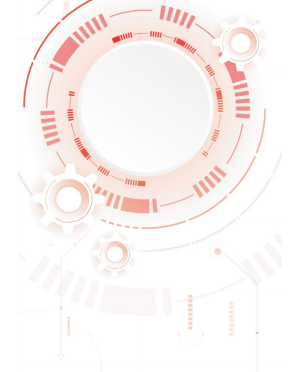
DH-IPC-HDW3849HP-AS-PV-0280B-S5

Dahua



Dahua DH-IPC-HDW3849HP-AS-PV-0280B-S5. Dahua WizSense IP Dome. 8MP@25/30ips, AI H.265+, Smart H.265+. ICR, 0.004/0.0004 lux, Smart Dual Light 30m. 2.8mm fixed optics. WDR 120dB, 3D-NR, 4 ROI. Perimeter protection and SMD 4.0. Active deterrence. Incorporates microphone and speaker. 1 input / 1 audio output. 1 input / 1 output alarm. MicroSD slot, RJ45, Onvif, IP67, 3AXIS, PoE. Dome ip 8mp smart dual light outdoor.

- 8-megapixel 1/2.7" CMOS sensor
- AI-H.265, AI-H.264, Smart H.265+, Smart H.264+, H.265, H.264, H.264, MJPEG video formats
- Digital resolution: 8MP (3840x2160), 6MP (3072x2048), 5MP (3072x1728, 2592x1944), 4MP (2688x1520), 3.6MP (2560x1440), 3MP (2304x1296, 2048x1536), 1080P (1920x1080), 1.3MP (1280x960), 720P (1280x720), D1 (704x576, 704x480), VGA (640x480), CIF (352x288, 352x240)
- Stream 1: 8MP (1~25/30 ips)
- Stream 2: D1 (1~25/30 fps)
- Stream 3: 1080P (1~25/30 ips)
- Day/Night mode with removable mechanical filter (ICR)
- Smart Dual Light: 1 IR led + 1 warm light led, 30 meters
- 0.004 lux F1.0 (color), 0.0004 lux F1.0 (B/W), 0 lux with activated illumination
- 2.8 mm fixed optics
- Angle of view: 106°(H), 55°(V), 125°(D)
- Imaging modes: BLC, HLC, WDR 120dB, SSA, 3D-NR, Mirror, Defog.
- Built-in Lens Distortion Correction (LDC)
- White balance with 6 modes
- Automatic gain control
- Supports 4-zone videosensor, 4 regions of interest (ROI) and 4-zone privacy mask
- Perimeter protection with cross-line detection and intrusion detection (both modes support human/vehicle classification)
- SMD 4.0: Less false alarms, longer detection distance
- Built-in microphone and speaker
- 1 audio input / 1 audio output
- 1 alarm input / 1 alarm output



- MicroSD card slot up to 256GB (not included)
- Network interface: RJ45 (10/100 Base-T)
- Network protocols: IPv4, IPv6, HTTP, TCP, UDP, ARP, RTP, RTSP, RTCP, RTMP, SMTP, FTP, SFTP, DHCP, DNS, DDNS, QoS, UPnP, NTP, Multicast, ICMP, IGMP, NFS, SAMBA, PPPoE, SNMP, P2P
- ONVIF (Profile S/T/G), CGI, SDK and API support
- Up to 20 users
- Remote viewing via IE, Chrome and Firefox browsers
- SmartPSS Lite, DSS, DMSS management software
- Compatible with IOS and Android mobile devices
- Power supply: 12V DC / PoE (802.3af)
- Maximum power consumption: 8.6W (12V) / 10.1W (PoE)
- Operating temperature from -40°C ~ +60°C
- Relative humidity: ≤95%.
- IP67 protection rating
- Metal housing
- Dimensions: Ø122 x 110.9 (H) mm
- Net weight: 750 g
- Gross weight: 920 g
- 3AXIS: 0°~360°(PAN), 0°~78°(TILT), 0°~360°(Rotation)

- DAHUA-4400